

## Mechanical Connectors

### ■ LVM Series - LV Bolted Branch Connectors

#### Application

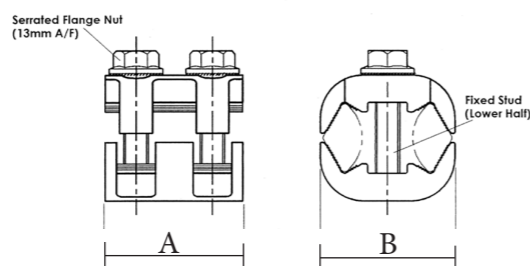
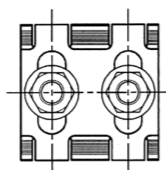
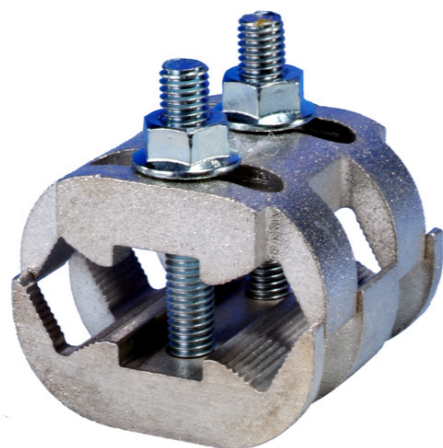
General purpose low voltage branch, service or straight connections.

#### Conductor Type

A wide range of conductor types including solid or stranded, circular or sector shaped, copper or aluminium, in any combination.

#### Features

- Includes dip moulded plastic shrouds
- Stainless steel fasteners
- Ideal alternative to “C” crimps



Product Number	Conductor* Size Range (mm) <sup>2</sup>	Overall Length (A) (mm)	Width (B) (mm)	Minimum Tightening Torque (Nm)
LVM1+SHROUD	16 - 95	45	34	14
LVM2+SHROUD	16 - 185	45	44	18
LVM3+SHROUD	16 - 300	50	54	18

\*Suitable for class 1 & 2 copper and aluminium conductors (AS1125) only. Not suitable for flexible cables.

© Sicame Australia Pty Ltd. The information presented here is subject to change without notice.

## Mechanical Connectors

### ■ WB Series - LV Bolted Branch Connectors

#### Application

Branch or tee connector for low voltage cable joints. Ideally suited for use in cast LV resin type joints.

#### Conductor Type

This versatile connector accommodates a vast array of conductor types, sizes and constructions in any combination;

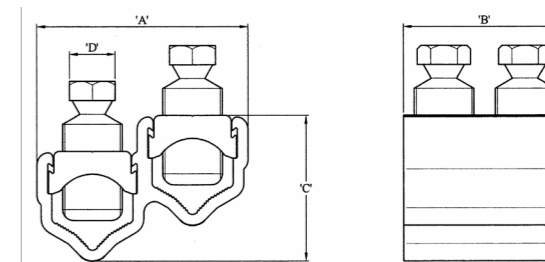
- Aluminium or copper
- Stranded\* or solid
- Circular or sector shaped
- 120° 3 core or 90° 4 core shaped

#### Features

- All connectors feature a shear-head bolt for precision contact force control.
- The removable bridge allows the easy mounting of conductors into the connector. Bending of cable cores is kept to an absolute minimum. Ideal for large conductors and restricted working spaces.
- The unique and advanced contact bolt design does not require the use of pressure pads on stranded conductor.
- Electro-tinned body and contact bolts enables the jointing of copper to copper or copper to aluminium conductors without the use of brass gauzes.
- The advanced design of the connector body allows the connection of sector shaped cables with the sector apex either pointing away or towards the contact bolt, minimising the need to twist sector cable cores.
- Service tap-offs, shrouds and other configurations available



Please ask us about the full range of options and accessories



Product Number	Mains Conductor* Size Range (mm) <sup>2</sup>	Branch Conductor Size Range (mm) <sup>2</sup>	Dimensions (mm) A x B x C	Bolt AF D (mm)
WB95	25 - 95	25 - 95	50 x 43 x 31.5	13
WB185	35 - 185	50 - 185	67 x 54 x 44	17
WB300	70 - 300	70 - 300	78 x 120 x 53	17

\*Suitable for class 1 & 2 copper and aluminium conductors (AS1125) only. Not suitable for flexible cables.

© Sicame Australia Pty Ltd. The information presented here is subject to change without notice.