

Mechanical Connectors

■ UM Series- LV Straight Connectors

Application

For the in-line connection of two low voltage power cables. Ideal for LV heat shrink or cast resin type joints.

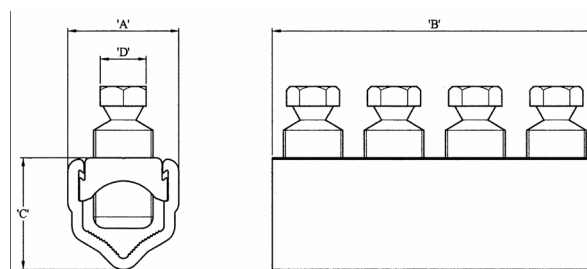
Conductor Type

This versatile connector accommodates a vast array of conductor types, sizes and constructions in any combination;

- Aluminium or copper
- Stranded* or solid
- Circular or sector shaped
- 120° 3 core or 90° 4 core sector shaped

Features

- All connectors feature a shear-head bolt for precision contact force control.
- The removable bridge allows the easy mounting of conductors into the connector. Bending of cable cores is kept to an absolute minimum. Ideal for large conductors and restricted working spaces.
- The unique and advanced contact bolt design does not require the use of pressure pads on stranded conductor.
- Electro-tinned body and contact bolts enables the joining of copper to copper or copper to aluminium conductors without the use of brass gauzes.
- The advanced design of the connector body allows the connection of sector shaped cables with the sector apex either pointing away or towards the contact bolt, minimising the need to twist sector shaped cores.



Product Number	Conductor* Size Range (mm) ²	Overall Length (B) (mm)	Width (A) x Height (C) (mm)	Hex Head AF (mm)
UM95	16 - 95	86	26 x 24.5	13
UM185	16 - 185	108	35 x 33	17
UM300	70 - 300	120	41 x 400	17

*Suitable for class 1 & 2 copper and aluminium conductors (AS1125) only. Not suitable for flexible cables.

© Sicame Australia Pty Ltd. The information presented here is subject to change without notice.

Mechanical Connectors

■ UM/S Series - LV Straight / Service Tap

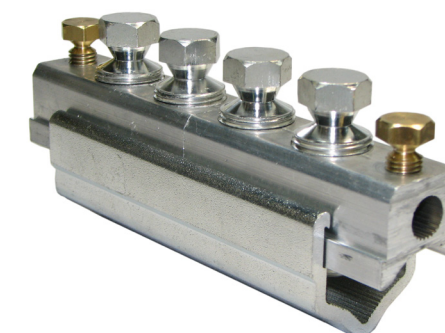
Application

A versatile "building block" approach to LV connectors -For LV mains branch jointing with services. Can also be used for neutral connections on 3 core wave form to 4 core sector joints.

Refer to UM series connectors for details of conductor types.

- Moulded insulating shrouds available
- Single or double service tap-offs available
- Many other configurations possible, consult factory for details

Please ask us about the full range of options and accessories



■ BSTA Series - LV Branch

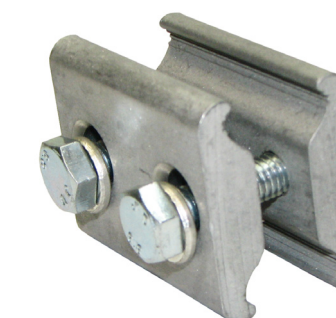
Application

Branch connections on mains cables or mains to mains connections.

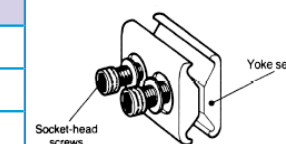
Conductor Type

3 or 4 core solid sector aluminium

Hexagonal head screw available as an option. Add suffix 'H' to product number. Eg, BST/A3H



Branch conductor* size (mm ²)	Mains conductor size (mm ²)						
	70	95	120	150	185	240	300
70	Green	Green	Green	Green			
95		Green	Green	Green			
120			Green	Green	Green		
150				Blue	Blue		
185					Red	Red	Red
240						Red	Red
300							Red



3/16 "AF hex drive required

Green BSTA/1 Blue All Connectors Red BST/A2 & BST/A3H

*Suitable for class 1 & 2 copper and aluminium conductors (AS1125) only. Not suitable for flexible cables.

© Sicame Australia Pty Ltd. The information presented here is subject to change without notice.