

# Termination and Suspension Clamps

## ■ SC Series - Suspension Clamps

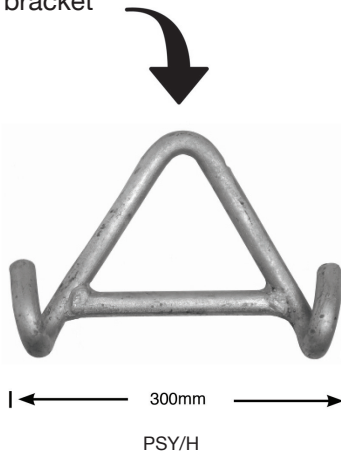
For suspension of overhead insulated mains and sub-mains. All aluminium and stainless steel construction, suitable for use in corrosive coastal environments.

### Application

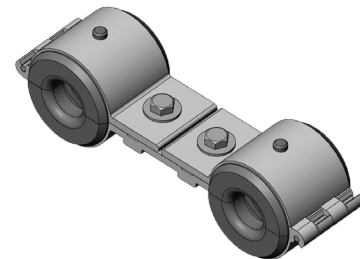
Suspension of LVABC from 25mm<sup>2</sup> to 150mm<sup>2</sup>.

### Features

- Suitable for angles up to 30°
- Hinged aluminium alloy with body & stainless steel hinge and fastener
- Stainless steel eyelet to prevent wear from vibrations
- Large angle yokes available
- 30° to 60° when used in tandem with PSY/H bracket



SC495



SC495 SPACER

Product Number	Diameter of circumscribing circle over laid-up cable cores (mm)	Cable Size (mm)			Pack Size
		2 Core	3 Core	4 Core	
SC435	22 to 27	50	30, 50	25, 35	20
SC450	27 to 30	-	-	50	20
SC470	30 to 33	95	-	70	20
SC495	37 to 40	-	-	95	20
SC4150	43 to 47	-	-	150	20
SC495 SPACER	37 to 40	-	-	95	10