

FACE PROTECTION FROM SPLASHES



In collaboration with



Morocco Industrial Purchases

MIP

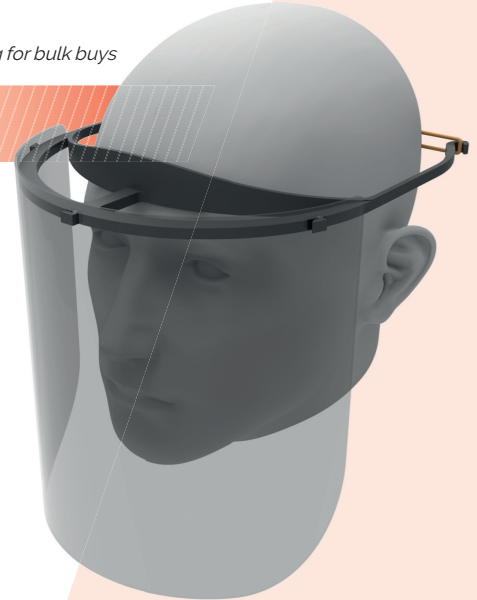
CW-11949

FACE SHIELD

*NOT FOR ELECTRICAL
PROTECTION*

\$24.75 ea

Improved pricing for bulk buys



9912018_01

Sicame Australia Head Office
23-25 Union Circuit Yatala, 4207 QLD
07 3807 7022
sales@sicame.com.au

NSW Sales Office
140 Glendenning Rd Glendenning, NSW 2761
02 9621 3155
sales@sicame.com.au



ASSEMBLY INSTRUCTIONS



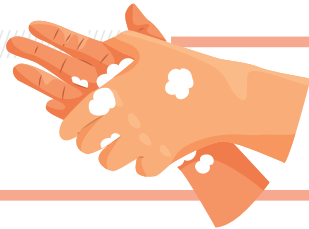
This kit includes:

- 1 plastic head support
- 1 plexi-glass visor
- 1 rubber band
- 1 user guide

STEP

1

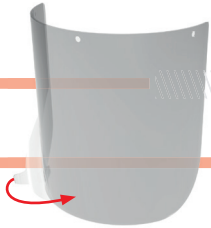
Before any manipulation, wash your hands with soap and water for 1 minute according to the WHO recommendations.



STEP

2

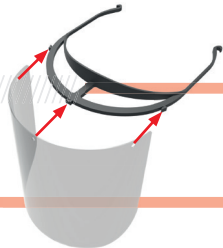
Remove the protective film from the visor.



STEP

3

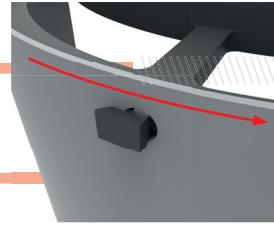
Place the notches of the visor on the lugs of the support.



STEP

4

Attach the visor by moving it sideways to the right.



STEP

5

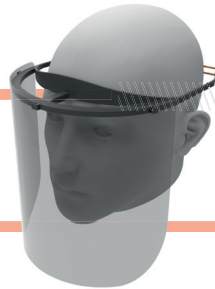
Position the rubber band at the back of the support.



STEP

6

For optimal use and protection, the mask must be placed on the forehead.



It is recommended to wash the mask regularly with soapy water.